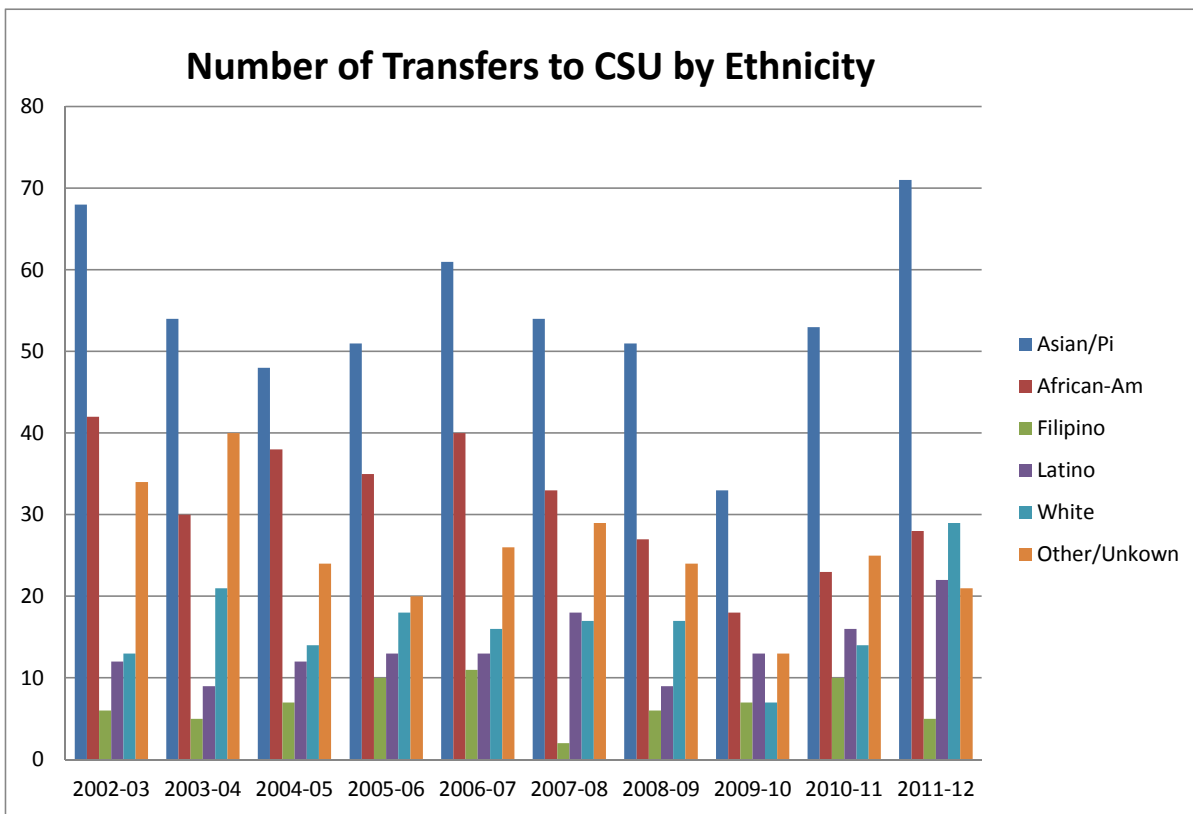


College of Alameda



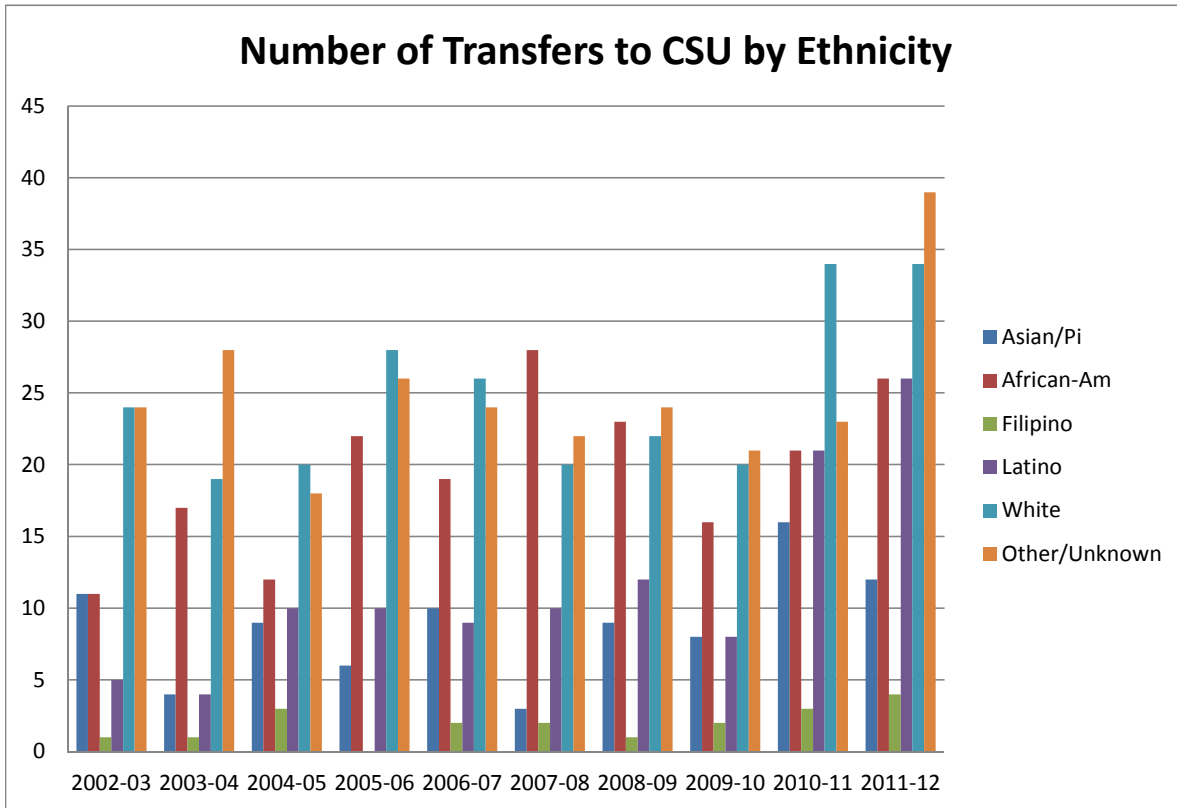
Number of CSU Transfers by Ethnicity

Year	Asian/Pi	African-Am	Filipino	Latino	White	Other/Unkown	Total
2002-03	68	42	6	12	13	34	175
2003-04	54	30	5	9	21	40	159
2004-05	48	38	7	12	14	24	143
2005-06	51	35	10	13	18	20	147
2006-07	61	40	11	13	16	26	167
2007-08	54	33	2	18	17	29	153
2008-09	51	27	6	9	17	24	134
2009-10	33	18	7	13	7	13	91
2010-11	53	23	10	16	14	25	141
2011-12	71	28	5	22	29	21	176

Percentage Distribution of CSU Transfers by Ethnicity

Year	Asian/Pi	African-Am	Filipino	Latino	White	Other/Unkown	Total
2002-03	39%	24%	3%	7%	7%	19%	100%
2003-04	34%	19%	3%	6%	13%	25%	100%
2004-05	34%	27%	5%	8%	10%	17%	100%
2005-06	35%	24%	7%	9%	12%	14%	100%
2006-07	37%	24%	7%	8%	10%	16%	100%
2007-08	35%	22%	1%	12%	11%	19%	100%
2008-09	38%	20%	4%	7%	13%	18%	100%
2009-10	36%	20%	8%	14%	8%	14%	100%
2010-11	38%	16%	7%	11%	10%	18%	100%
2011-12	40%	16%	3%	13%	16%	12%	100%

Berkeley City College



Number of CSU Transfers by Ethnicity

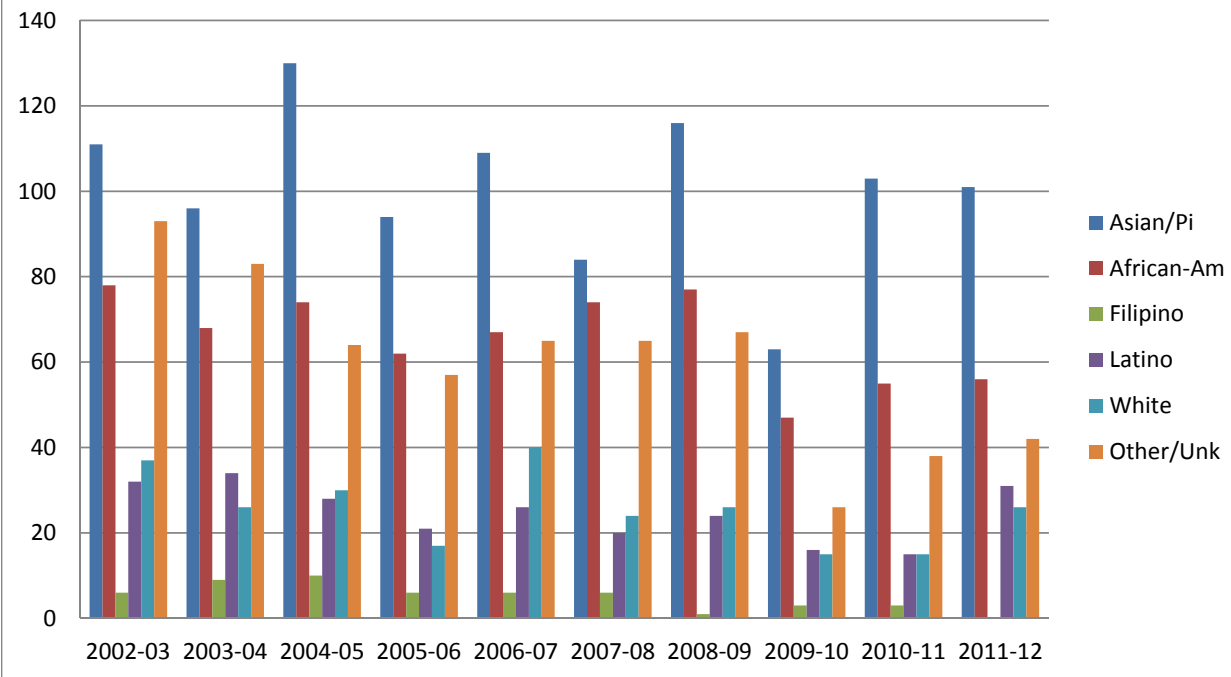
Year	Asian/Pi	African-Am	Filipino	Latino	White	Other/Unk	Total
2002-03	11	11	1	5	24	24	76
2003-04	4	17	1	4	19	28	73
2004-05	9	12	3	10	20	18	72
2005-06	6	22	0	10	28	26	92
2006-07	10	19	2	9	26	24	90
2007-08	3	28	2	10	20	22	85
2008-09	9	23	1	12	22	24	91
2009-10	8	16	2	8	20	21	75
2010-11	16	21	3	21	34	23	118
2011-12	12	26	4	26	34	39	141

Number of CSU Transfers by Ethnicity

Year	Asian/Pi	African-Am	Filipino	Latino	White	Other/Unk	Total
2002-03	14%	14%	1%	7%	32%	32%	100%
2003-04	5%	23%	1%	5%	26%	38%	100%
2004-05	13%	17%	4%	14%	28%	25%	100%
2005-06	7%	24%	0%	11%	30%	28%	100%
2006-07	11%	21%	2%	10%	29%	27%	100%
2007-08	4%	33%	2%	12%	24%	26%	100%
2008-09	10%	25%	1%	13%	24%	26%	100%
2009-10	11%	21%	3%	11%	27%	28%	100%
2010-11	14%	18%	3%	18%	29%	19%	100%
2011-12	9%	18%	3%	18%	24%	28%	100%

Laney College

Number of CSU Transfers by Ethnicity



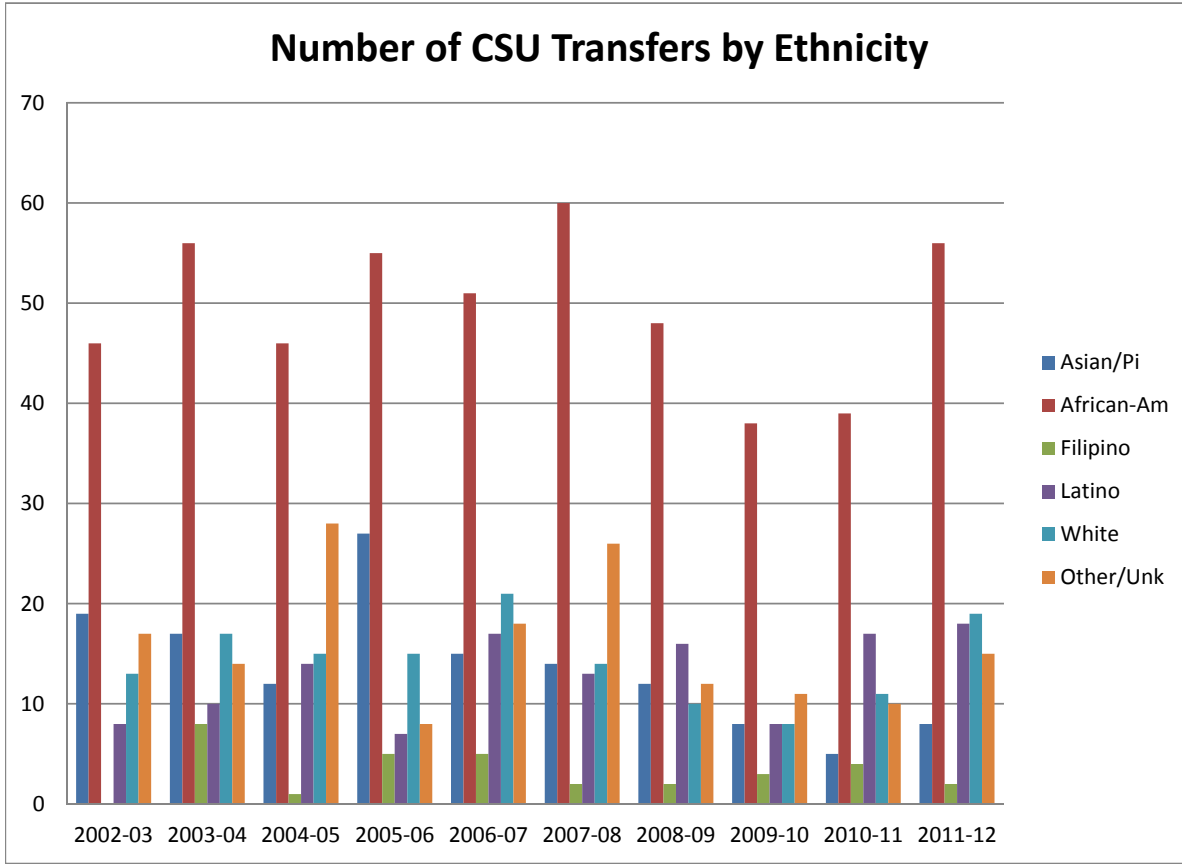
Number of CSU Transfers by Ethnicity

Year	Asian/Pi	African-Am	Filipino	Latino	White	Other/Unk	Totals
2002-03	111	78	6	32	37	93	357
2003-04	96	68	9	34	26	83	316
2004-05	130	74	10	28	30	64	336
2005-06	94	62	6	21	17	57	257
2006-07	109	67	6	26	40	65	313
2007-08	84	74	6	20	24	65	273
2008-09	116	77	1	24	26	67	311
2009-10	63	47	3	16	15	26	170
2010-11	103	55	3	15	15	38	229
2011-12	101	56	0	31	26	42	256

Percentage Distribution of CSU Transfers by Ethnicity

Year	Asian/Pi	African-Am	Filipino	Latino	White	Other/Unk	Totals
2002-03	31%	22%	2%	9%	10%	26%	100%
2003-04	30%	22%	3%	11%	8%	26%	100%
2004-05	39%	22%	3%	8%	9%	19%	100%
2005-06	37%	24%	2%	8%	7%	22%	100%
2006-07	35%	21%	2%	8%	13%	21%	100%
2007-08	31%	27%	2%	7%	9%	24%	100%
2008-09	37%	25%	0%	8%	8%	22%	100%
2009-10	37%	28%	2%	9%	9%	15%	100%
2010-11	45%	24%	1%	7%	7%	17%	100%
2011-12	39%	22%	0%	12%	10%	16%	100%

Merritt College



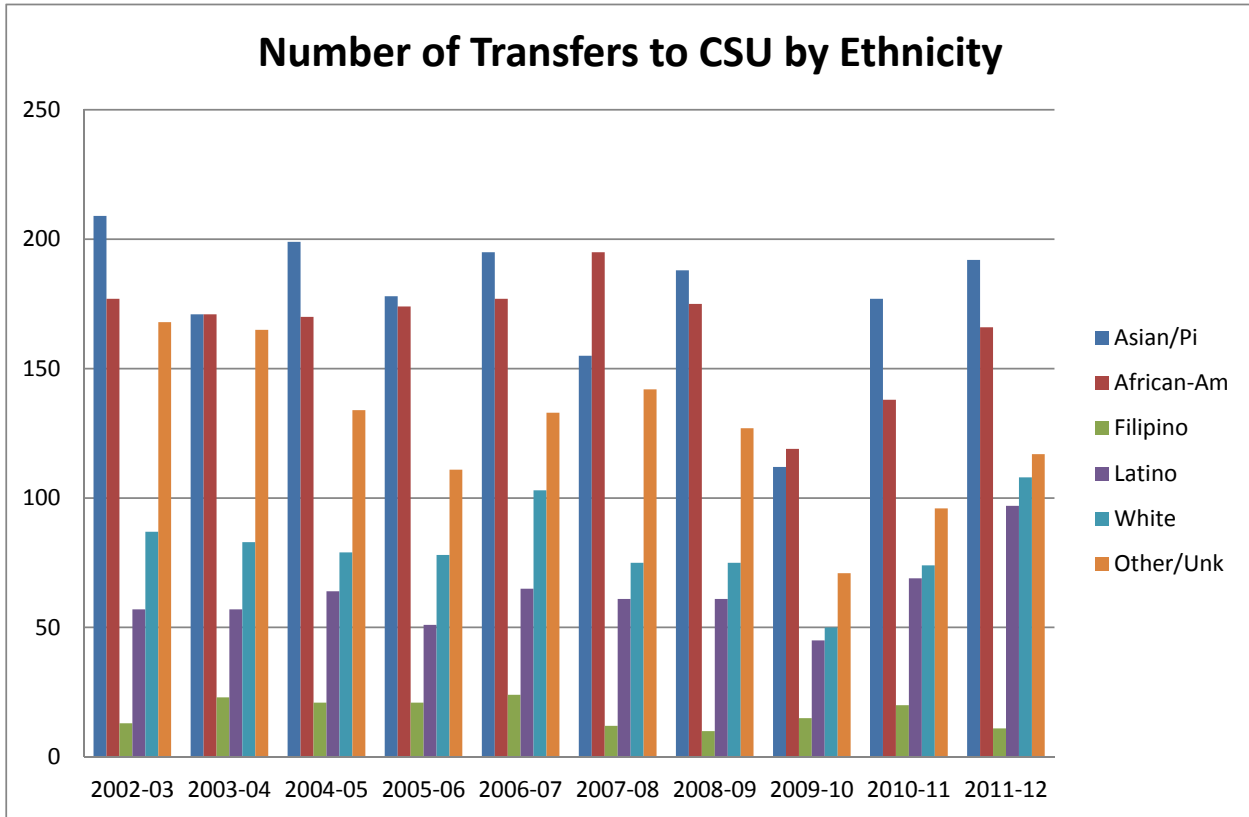
Number of CSU Transfers by Ethnicity

Year	Asian/Pi	African-Am	Filipino	Latino	White	Other/Unk	Totals
2002-03	19	46	0	8	13	17	103
2003-04	17	56	8	10	17	14	122
2004-05	12	46	1	14	15	28	116
2005-06	27	55	5	7	15	8	117
2006-07	15	51	5	17	21	18	127
2007-08	14	60	2	13	14	26	129
2008-09	12	48	2	16	10	12	100
2009-10	8	38	3	8	8	11	76
2010-11	5	39	4	17	11	10	86
2011-12	8	56	2	18	19	15	118

Percentage Distribution of CSU Transfers by Ethnicity

Year	Asian/Pi	African-Am	Filipino	Latino	White	Other/Unk	Totals
2002-03	18%	45%	0%	8%	13%	17%	100%
2003-04	14%	46%	7%	8%	14%	11%	100%
2004-05	10%	40%	1%	12%	13%	24%	100%
2005-06	23%	47%	4%	6%	13%	7%	100%
2006-07	12%	40%	4%	13%	17%	14%	100%
2007-08	11%	47%	2%	10%	11%	20%	100%
2008-09	12%	48%	2%	16%	10%	12%	100%
2009-10	11%	50%	4%	11%	11%	14%	100%
2010-11	6%	45%	5%	20%	13%	12%	100%
2011-12	7%	47%	2%	15%	16%	13%	100%

Peralta Community College District



Number of CSU Transfers by Ethnicity

Year	Asian/Pi	African-Am	Filipino	Latino	White	Other/Unk	Totals
2002-03	209	177	13	57	87	168	711
2003-04	171	171	23	57	83	165	670
2004-05	199	170	21	64	79	134	667
2005-06	178	174	21	51	78	111	613
2006-07	195	177	24	65	103	133	697
2007-08	155	195	12	61	75	142	640
2008-09	188	175	10	61	75	127	636
2009-10	112	119	15	45	50	71	412
2010-11	177	138	20	69	74	96	574
2011-12	192	166	11	97	108	117	691

Percentage Distribution of CSU Transfers by Ethnicity

Year	Asian/Pi	African-Am	Filipino	Latino	White	Other/Unk	Totals
2002-03	29%	25%	2%	8%	12%	24%	100%
2003-04	26%	26%	3%	9%	12%	25%	100%
2004-05	30%	25%	3%	10%	12%	20%	100%
2005-06	29%	28%	3%	8%	13%	18%	100%
2006-07	28%	25%	3%	9%	15%	19%	100%
2007-08	24%	30%	2%	10%	12%	22%	100%
2008-09	30%	28%	2%	10%	12%	20%	100%
2009-10	27%	29%	4%	11%	12%	17%	100%
2010-11	31%	24%	3%	12%	13%	17%	100%
2011-12	28%	24%	2%	14%	16%	17%	100%