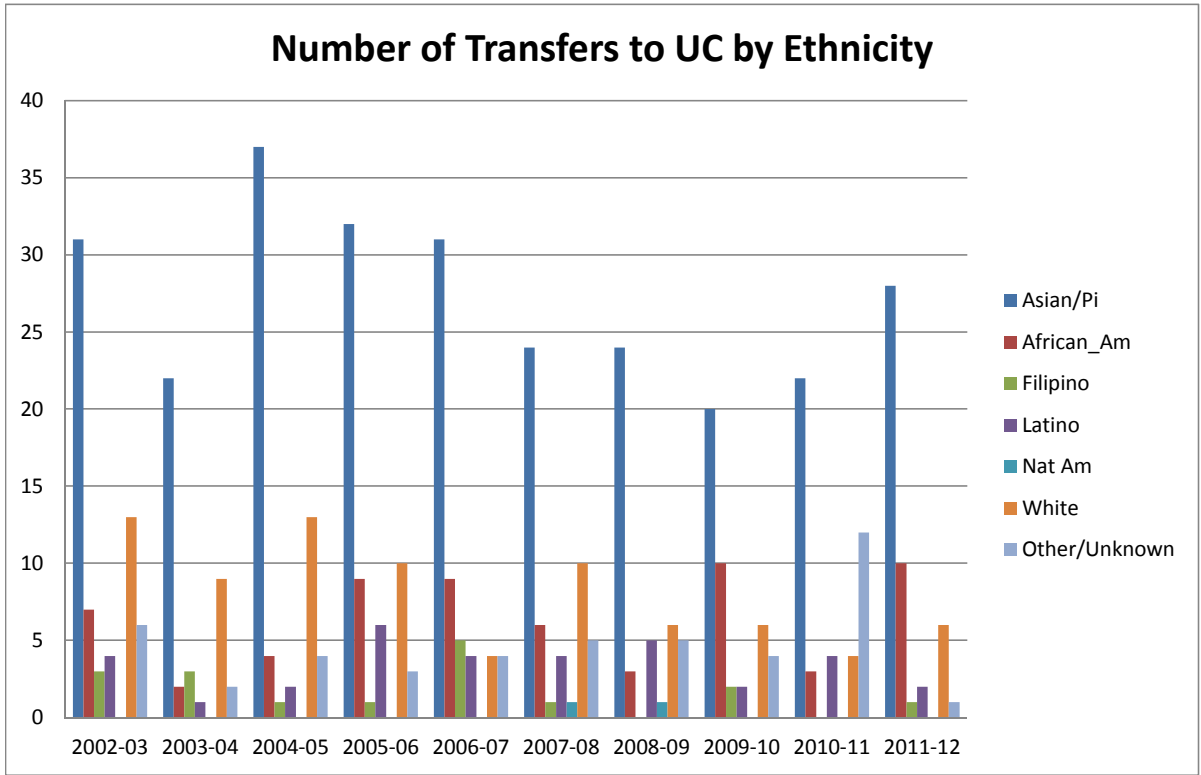


**College of Alameda**



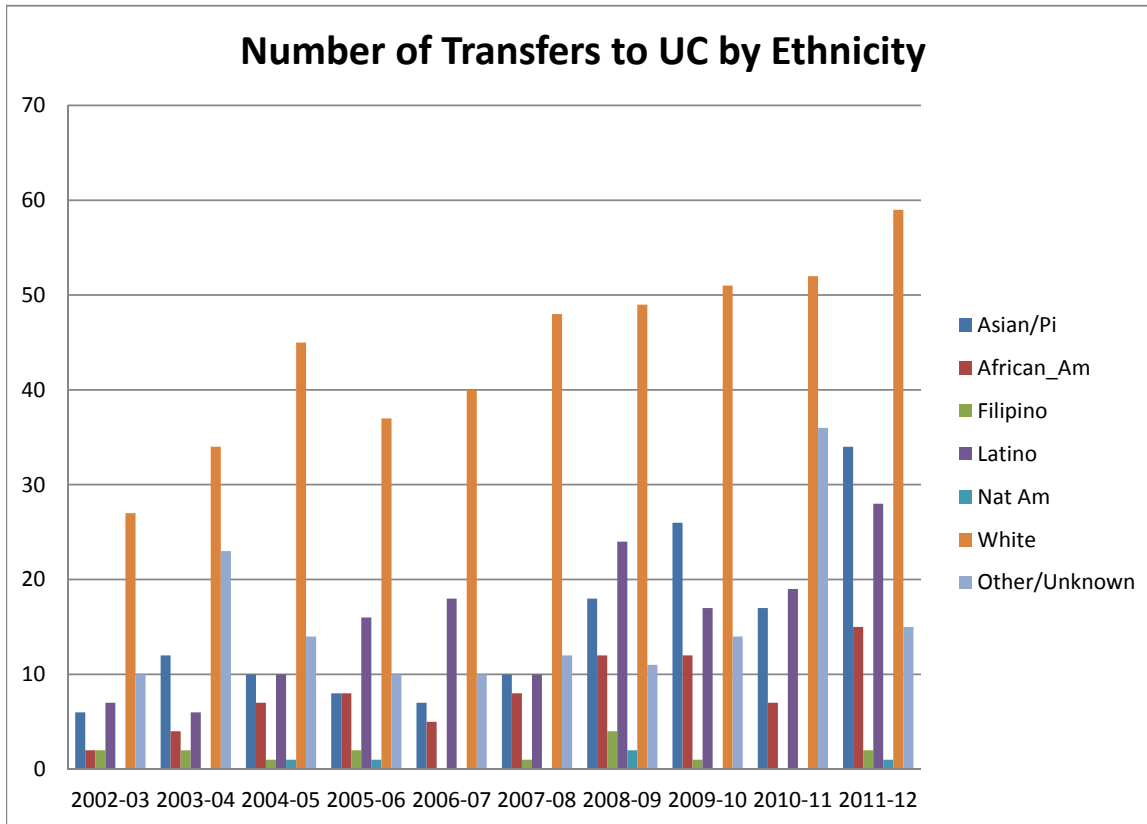
**Number of UC Transfers by Ethnicity**

Year	Asian/Pi	African_Am	Filipino	Latino	Nat Am	White	Other/Unknown	Totals
2002-03	31	7	3	4	0	13	6	64
2003-04	22	2	3	1	0	9	2	39
2004-05	37	4	1	2	0	13	4	61
2005-06	32	9	1	6	0	10	3	61
2006-07	31	9	5	4	0	4	4	57
2007-08	24	6	1	4	1	10	5	51
2008-09	24	3	0	5	1	6	5	44
2009-10	20	10	2	2	0	6	4	44
2010-11	22	3	0	4	0	4	12	45
2011-12	28	10	1	2	0	6	1	48

**Percentage Distribution of UC Transfers by Ethnicity**

Year	Asian/Pi	African_Am	Filipino	Latino	Nat Am	White	Other/Unknown	Totals
2002-03	48%	11%	5%	6%	0%	20%	9%	100%
2003-04	56%	5%	8%	3%	0%	23%	5%	100%
2004-05	61%	7%	2%	3%	0%	21%	7%	100%
2005-06	52%	15%	2%	10%	0%	16%	5%	100%
2006-07	54%	16%	9%	7%	0%	7%	7%	100%
2007-08	47%	12%	2%	8%	2%	20%	10%	100%
2008-09	55%	7%	0%	11%	2%	14%	11%	100%
2009-10	45%	23%	5%	5%	0%	14%	9%	100%
2010-11	49%	7%	0%	9%	0%	9%	27%	100%
2011-12	58%	21%	2%	4%	0%	13%	2%	100%

## Berkeley City College



### Number of UC Transfers by Ethnicity

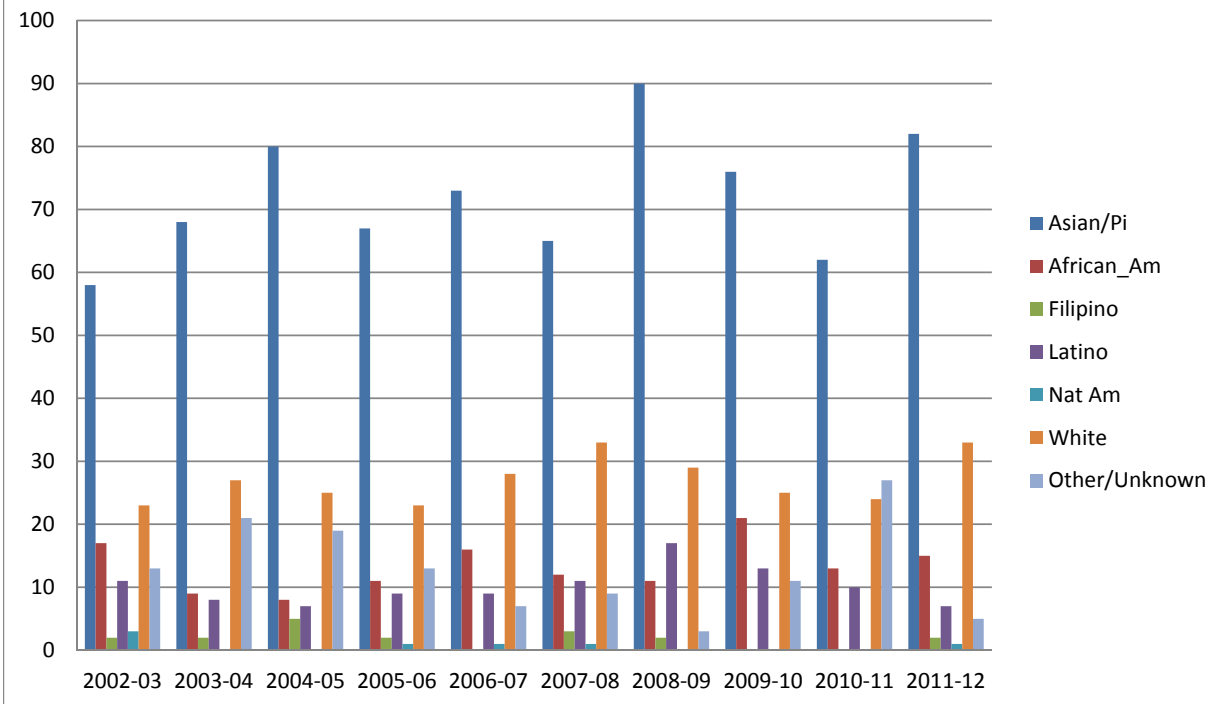
Year	Asian/Pi	African_An	Filipino	Latino	Nat Am	White	Other/Unk	Totals
2002-03	6	2	2	7	0	27	10	54
2003-04	12	4	2	6	0	34	23	81
2004-05	10	7	1	10	1	45	14	88
2005-06	8	8	2	16	1	37	10	82
2006-07	7	5	0	18	0	40	10	80
2007-08	10	8	1	10	0	48	12	89
2008-09	18	12	4	24	2	49	11	120
2009-10	26	12	1	17	0	51	14	121
2010-11	17	7	0	19	0	52	36	131
2011-12	34	15	2	28	1	59	15	154

### Percentage Distribution of UC Transfers by Ethnicity

Year	Asian/Pi	African_An	Filipino	Latino	Nat Am	White	Other/Unk	Totals
2002-03	11%	4%	4%	13%	0%	50%	19%	100%
2003-04	15%	5%	2%	7%	0%	42%	28%	100%
2004-05	11%	8%	1%	11%	1%	51%	16%	100%
2005-06	10%	10%	2%	20%	1%	45%	12%	100%
2006-07	9%	6%	0%	23%	0%	50%	13%	100%
2007-08	11%	9%	1%	11%	0%	54%	13%	100%
2008-09	15%	10%	3%	20%	2%	41%	9%	100%
2009-10	21%	10%	1%	14%	0%	42%	12%	100%
2010-11	13%	5%	0%	15%	0%	40%	27%	100%
2011-12	22%	10%	1%	18%	1%	38%	10%	100%

## Laney College

### Number of Transfers to UC by Ethnicity



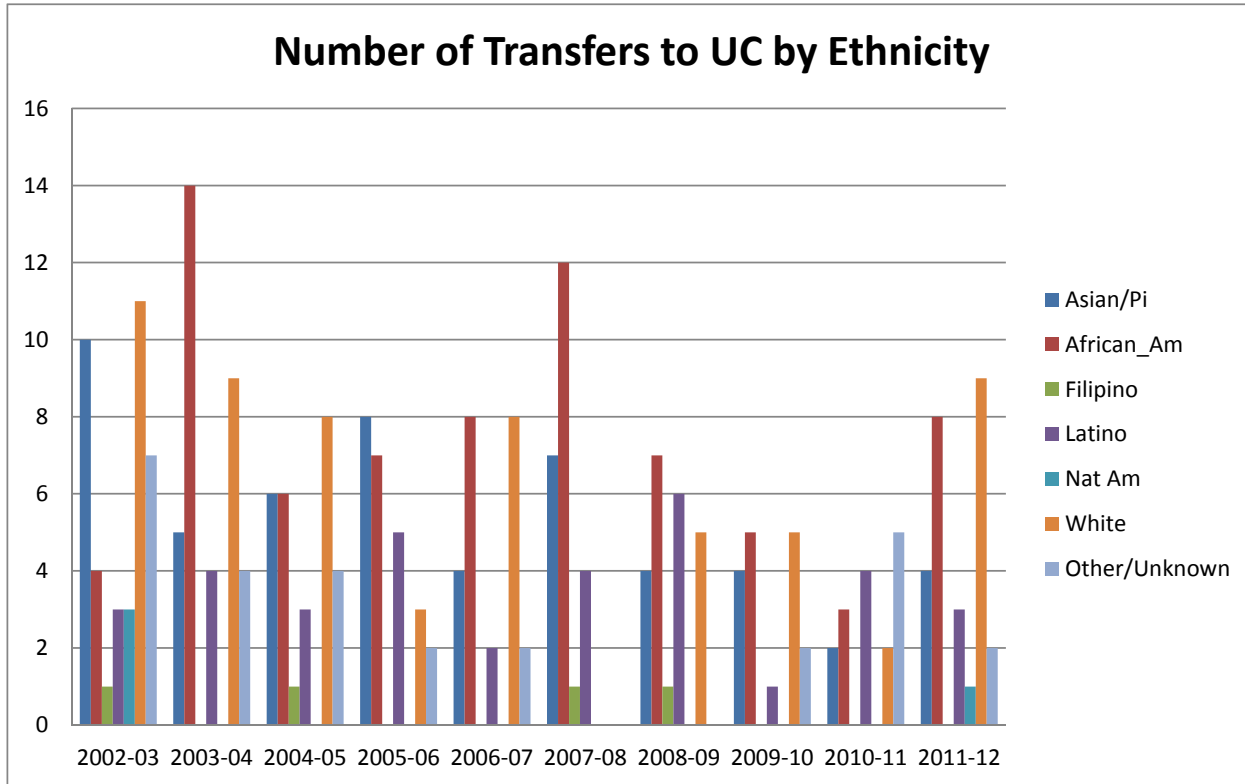
#### Number of UC Transfers by Ethnicity

Year	Asian/Pi	African_Am	Filipino	Latino	Nat Am	White	Other/Unknown	Totals
2002-03	58	17	2	11	3	23	13	127
2003-04	68	9	2	8	0	27	21	135
2004-05	80	8	5	7	0	25	19	144
2005-06	67	11	2	9	1	23	13	126
2006-07	73	16	0	9	1	28	7	134
2007-08	65	12	3	11	1	33	9	134
2008-09	90	11	2	17	0	29	3	152
2009-10	76	21	0	13	0	25	11	146
2010-11	62	13	0	10	0	24	27	136
2011-12	82	15	2	7	1	33	5	145

#### Percentage Distribution of UC Transfers by Ethnicity

Year	Asian/Pi	African_Am	Filipino	Latino	Nat Am	White	Other/Unknown	Totals
2002-03	46%	13%	2%	9%	2%	18%	10%	100%
2003-04	50%	7%	1%	6%	0%	20%	16%	100%
2004-05	56%	6%	3%	5%	0%	17%	13%	100%
2005-06	53%	9%	2%	7%	1%	18%	10%	100%
2006-07	54%	12%	0%	7%	1%	21%	5%	100%
2007-08	49%	9%	2%	8%	1%	25%	7%	100%
2008-09	59%	7%	1%	11%	0%	19%	2%	100%
2009-10	52%	14%	0%	9%	0%	17%	8%	100%
2010-11	46%	10%	0%	7%	0%	18%	20%	100%
2011-12	57%	10%	1%	5%	1%	23%	3%	100%

## Merritt College



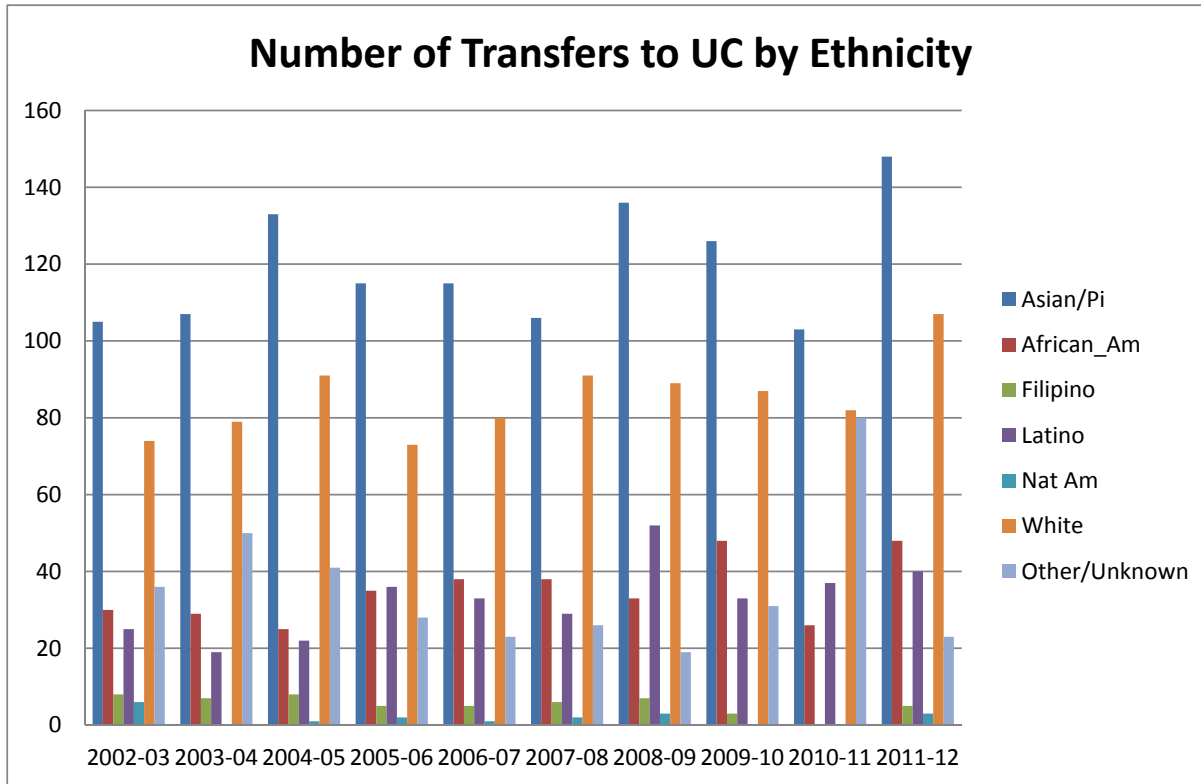
### Number of UC Transfers by Ethnicity

Year	Asian/Pi	African_Am	Filipino	Latino	Nat Am	White	Other/Unk	Totals
2002-03	10	4	1	3	3	11	7	39
2003-04	5	14	0	4	0	9	4	36
2004-05	6	6	1	3	0	8	4	28
2005-06	8	7	0	5	0	3	2	25
2006-07	4	8	0	2	0	8	2	24
2007-08	7	12	1	4	0	0	0	24
2008-09	4	7	1	6	0	5	0	23
2009-10	4	5	0	1	0	5	2	17
2010-11	2	3	0	4	0	2	5	16
2011-12	4	8	0	3	1	9	2	27

### Percentage Distribution of UC Transfers by Ethnicity

Year	Asian/Pi	African_Am	Filipino	Latino	Nat Am	White	Other/Unk	Totals
2002-03	26%	10%	3%	8%	8%	28%	18%	100%
2003-04	14%	39%	0%	11%	0%	25%	11%	100%
2004-05	21%	21%	4%	11%	0%	29%	14%	100%
2005-06	32%	28%	0%	20%	0%	12%	8%	100%
2006-07	17%	33%	0%	8%	0%	33%	8%	100%
2007-08	29%	50%	4%	17%	0%	0%	0%	100%
2008-09	17%	30%	4%	26%	0%	22%	0%	100%
2009-10	24%	29%	0%	6%	0%	29%	12%	100%
2010-11	13%	19%	0%	25%	0%	13%	31%	100%
2011-12	15%	30%	0%	11%	4%	33%	7%	100%

## Peralta Community College District



### Number of UC Transfers by Ethnicity

Year	Asian/Pi	African_Ar	Filipino	Latino	Nat Am	White	Other/Unknown	Totals
2002-03	105	30	8	25	6	74	36	284
2003-04	107	29	7	19	0	79	50	291
2004-05	133	25	8	22	1	91	41	321
2005-06	115	35	5	36	2	73	28	294
2006-07	115	38	5	33	1	80	23	295
2007-08	106	38	6	29	2	91	26	298
2008-09	136	33	7	52	3	89	19	339
2009-10	126	48	3	33	0	87	31	328
2010-11	103	26	0	37	0	82	80	328
2011-12	148	48	5	40	3	107	23	374

### Percentage Distribution of UC Transfers by Ethnicity

Year	Asian/Pi	African_Ar	Filipino	Latino	Nat Am	White	Other/Unknown	Totals
2002-03	37%	11%	3%	9%	2%	26%	13%	100%
2003-04	37%	10%	2%	7%	0%	27%	17%	100%
2004-05	41%	8%	2%	7%	0%	28%	13%	100%
2005-06	39%	12%	2%	12%	1%	25%	10%	100%
2006-07	39%	13%	2%	11%	0%	27%	8%	100%
2007-08	36%	13%	2%	10%	1%	31%	9%	100%
2008-09	40%	10%	2%	15%	1%	26%	6%	100%
2009-10	38%	15%	1%	10%	0%	27%	9%	100%
2010-11	31%	8%	0%	11%	0%	25%	24%	100%
2011-12	40%	13%	1%	11%	1%	29%	6%	100%