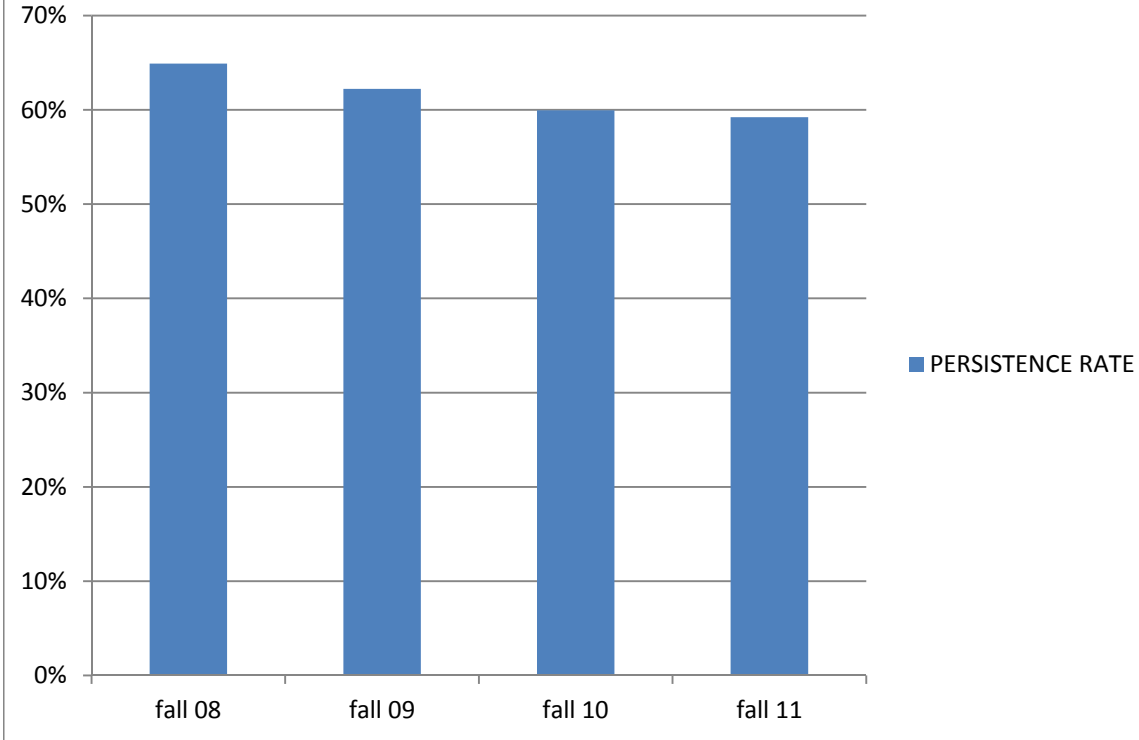


# College of Alameda

## Fall to Fall Persistence of EOPS Student Cohorts



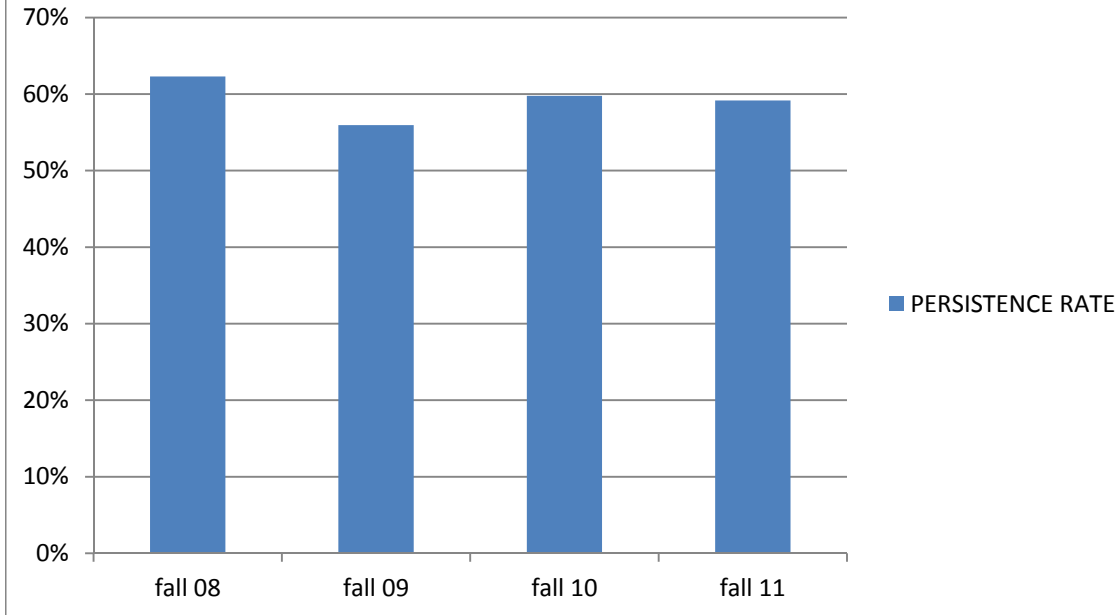
### Fall to Fall Persistence of College of Alameda EOPS Student Cohorts

COLLEGE	TERM	COHORT	PERSISTENCE	PERSISTENCE RATE
ALAMEDA	fall 08	493	320	65%
ALAMEDA	fall 09	458	285	62%
ALAMEDA	fall 10	427	256	60%
ALAMEDA	fall 11	429	254	59%

**Note:** Persistence Rate is defined as the percentage of students enrolled in at least one class at the college at fall census of the cohort year who were then enrolled in at least one class on the following fall opening day in District.

# Berkeley City College

## Fall to Fall Persistence of EOPS Student Cohorts



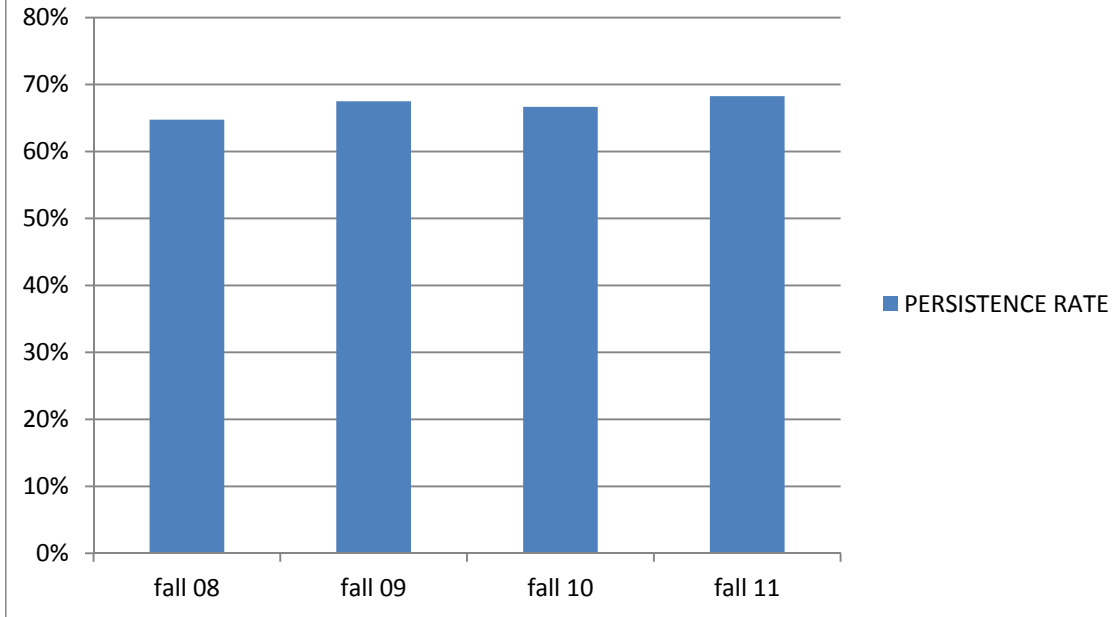
### Fall to Fall Persistence of Berkeley City College EOPS Student Cohorts

COLLEGE	TERM	COHORT	PERSISTENCE	PERSISTENCE RATE
BERKELEY	fall 08	366	228	62%
BERKELEY	fall 09	311	174	56%
BERKELEY	fall 10	348	208	60%
BERKELEY	fall 11	240	142	59%

**Note:** Persistence Rate is defined as the percentage of students enrolled in at least one class at the college at fall census of the cohort year who were then enrolled in at least one class on the following fall opening day in District.

# Laney College

## Fall to Fall Persistence of EOPS Student Cohorts



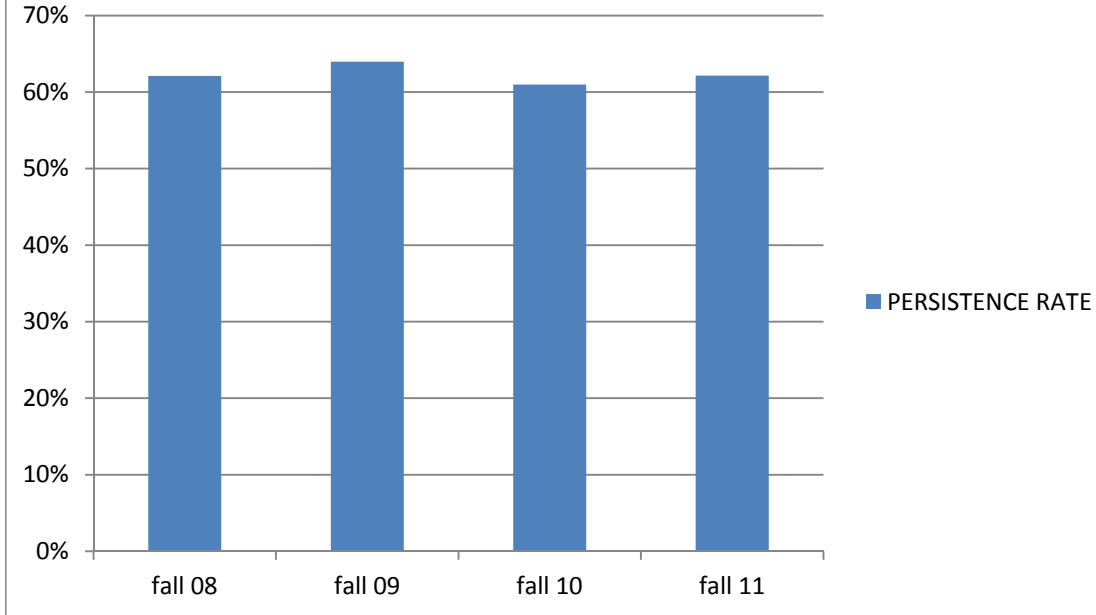
### Fall to Fall Persistence of Laney College EOPS Student Cohorts

COLLEGE	TERM	COHORT	PERSISTENCE	PERSISTENCE RATE
LANEY	fall 08	1123	727	65%
LANEY	fall 09	880	594	68%
LANEY	fall 10	684	456	67%
LANEY	fall 11	687	469	68%

**Note:** Persistence Rate is defined as the percentage of students enrolled in at least one class at the college at fall census of the cohort year who were then enrolled in at least one class on the following fall opening day in District.

# Merritt College

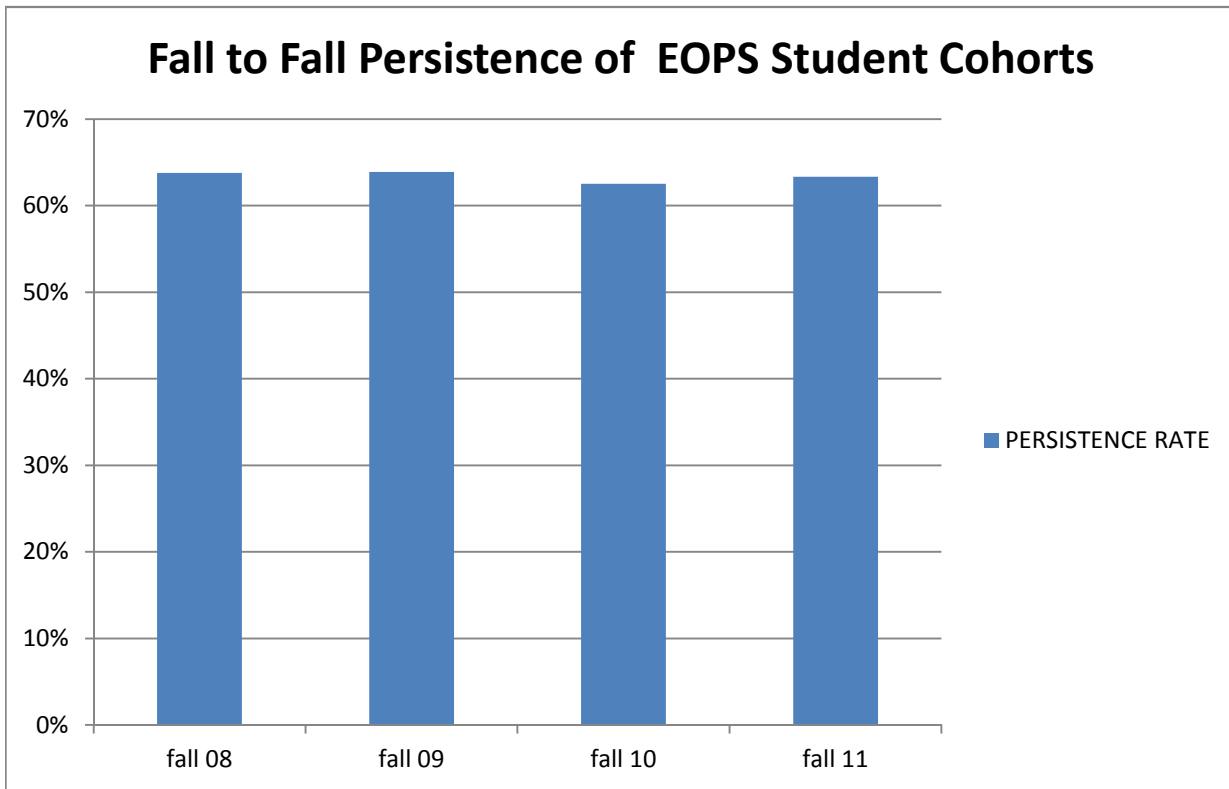
## Fall to Fall Persistence of EOPS Student Cohorts



### Fall to Fall Persistence of Merritt College EOPS Student Cohorts

COLLEGE	TERM	COHORT	PERSISTENCE	PERSISTENCE RATE
MERRITT	fall 08	636	395	62%
MERRITT	fall 09	544	348	64%
MERRITT	fall 10	487	297	61%
MERRITT	fall 11	457	284	62%

# Peralta Community College District



### Fall to Fall Persistence of PCCD EOPS Student Cohorts

COLLEGE	TERM	COHORT	PERSISTENCE	PERSISTENCE RATE
PCCD	fall 08	2617	1669	64%
PCCD	fall 09	2193	1401	64%
PCCD	fall 10	1945	1216	63%
PCCD	fall 11	1811	1147	63%

**Note:** Persistence Rate is defined as the percentage of students enrolled in at least one class at the college at fall census of the cohort year who were then enrolled in at least one class on the following fall opening day in District.