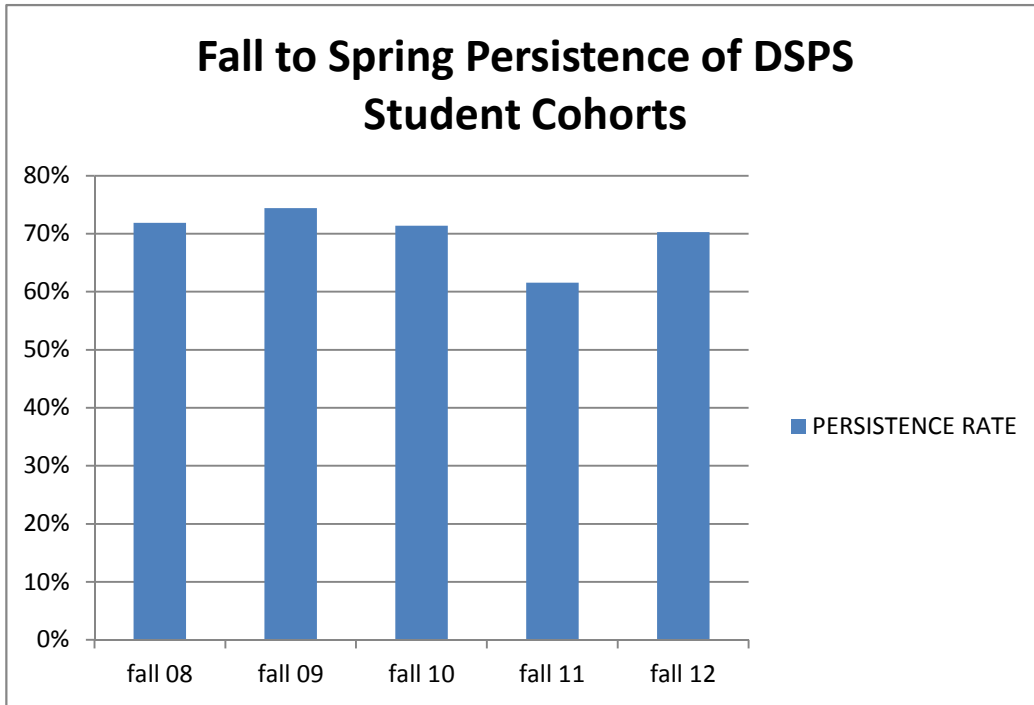


# College of Alameda



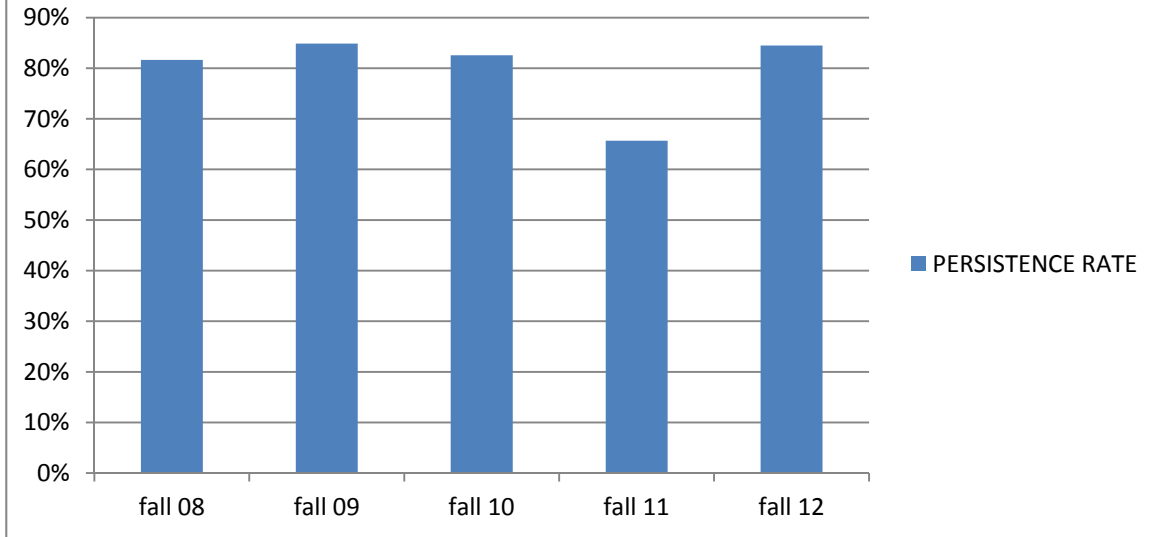
### Fall to Spring Persistence of College of Alameda DSPS Student Cohorts

COLLEGE	TERM	COHORT	PERSISTENCE	PERSISTENCE RATE
ALAMEDA	fall 08	320	230	72%
ALAMEDA	fall 09	379	282	74%
ALAMEDA	fall 10	391	279	71%
ALAMEDA	fall 11	393	242	62%
ALAMEDA	fall 12	390	274	70%

**Note:** Persistence Rate is defined as the percentage of students enrolled in at least one class at the college at fall census of the cohort year who were then enrolled in at least one class on the following spring opening day in District.

# Berkeley City College

## Fall to Spring Persistence of DSPS Student Cohorts



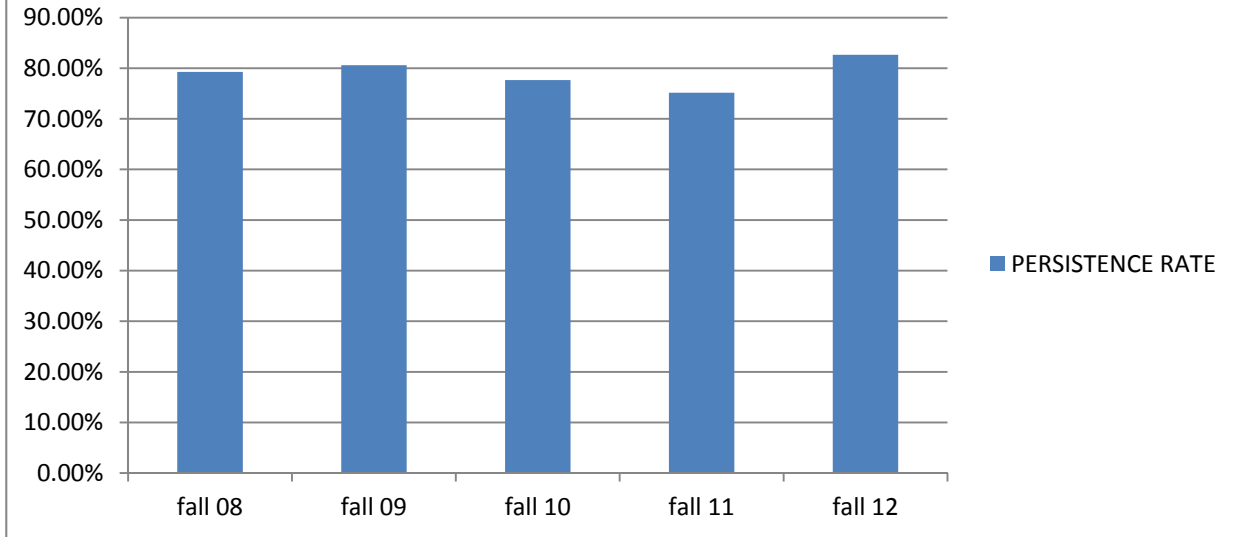
### Fall to Spring Persistence of Berkeley City College DSPS Student Cohorts

COLLEGE	TERM	COHORT	PERSISTENCE	PERSISTENCE RATE
BERKELEY	fall 08	283	231	82%
BERKELEY	fall 09	264	224	85%
BERKELEY	fall 10	281	232	83%
BERKELEY	fall 11	236	155	66%
BERKELEY	fall 12	245	207	84%

**Note:** Persistence Rate is defined as the percentage of students enrolled in at least one class at the college at fall census of the cohort year who were then enrolled in at least one class on the following spring opening day in District.

# Laney College

## Fall to Spring Persistence of DSPS Student Cohorts



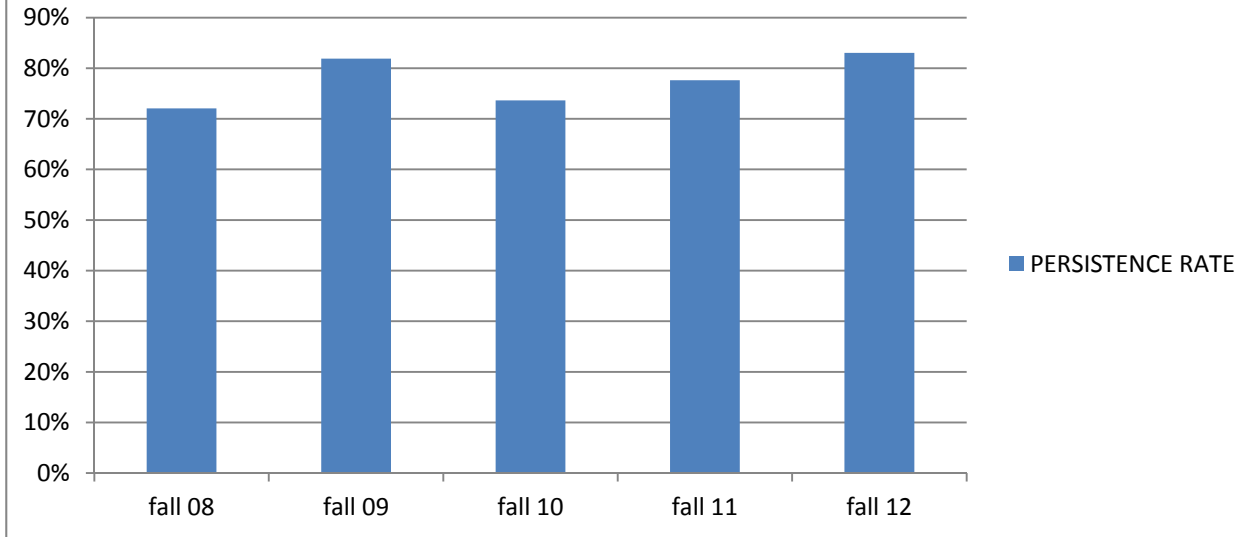
### Fall to Spring Persistence of Laney College DSPS Student Cohorts

COLLEGE	TERM	COHORT	PERSISTENCE	PERSISTENCE RATE
LANEY	fall 08	323	256	79.26%
LANEY	fall 09	309	249	80.58%
LANEY	fall 10	300	233	77.67%
LANEY	fall 11	318	239	75.16%
LANEY	fall 12	409	338	82.64%

**Note:** Persistence Rate is defined as the percentage of students enrolled in at least one class at the college at fall census of the cohort year who were then enrolled in at least one class on the following spring opening day in District.

# Merritt College

## Fall to Spring Persistence of DSPS Student Cohorts

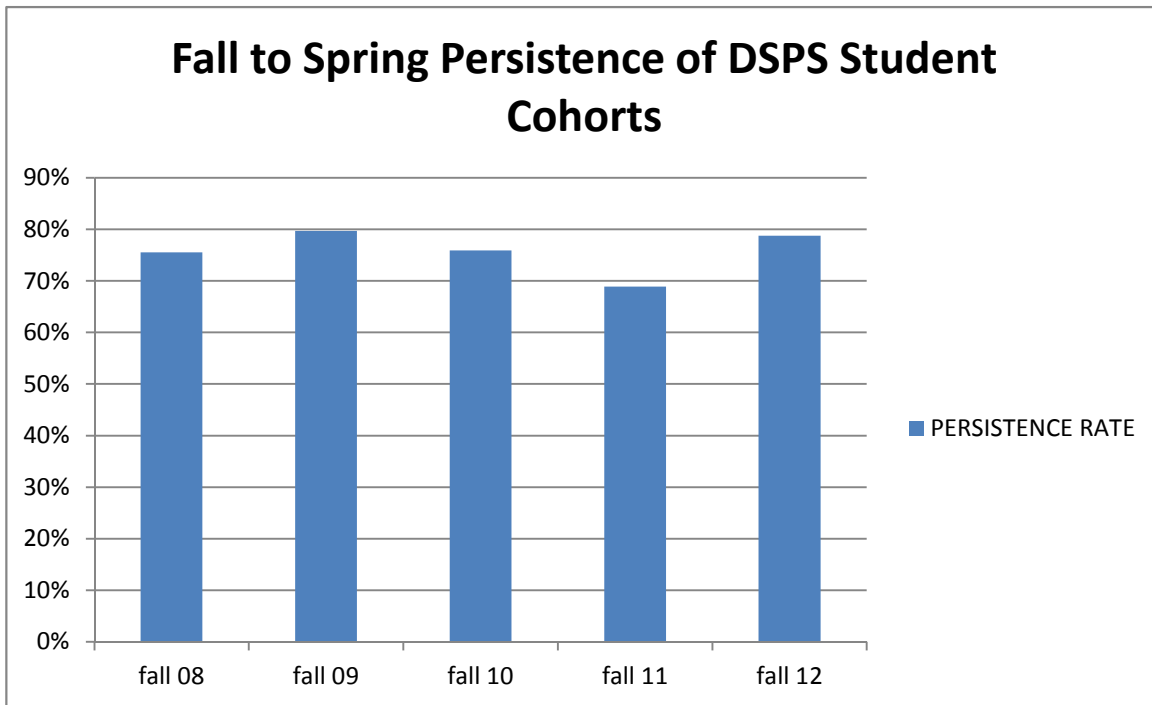


### Fall to Spring Persistence of Merritt College DSPS Student Cohorts

COLLEGE	TERM	COHORT	PERSISTENCE	PERSISTENCE RATE
MERRITT	fall 08	358	258	72%
MERRITT	fall 09	221	181	82%
MERRITT	fall 10	315	232	74%
MERRITT	fall 11	286	222	78%
MERRITT	fall 12	283	235	83%

**Note:** Persistence Rate is defined as the percentage of students enrolled in at least one class at the college at fall census of the cohort year who were then enrolled in at least one class on the following spring opening day in District.

# Peralta Community College District



### Fall to Spring Persistence of PCCD DSPS Student Cohorts

COLLEGE	TERM	COHORT	PERSISTENCE	PERSISTENCE RATE
PCCD	fall 08	1231	930	76%
PCCD	fall 09	1116	889	80%
PCCD	fall 10	1217	924	76%
PCCD	fall 11	1161	800	69%
PCCD	fall 12	1218	959	79%

**Note:** Persistence Rate is defined as the percentage of students enrolled in at least one class at the college at fall census of the cohort year who were then enrolled in at least one class on the following spring opening day in District.